



NoCo PLACES Fact Sheet



NoCo PLACES 2050 collaborates to protect and conserve natural and cultural resources while providing equitable access and a quality recreation experience for current and future generations.



Challenge: Increased population, overcrowding, and visitor conflict.



Challenge: Limiting expansion of recreation into preserved areas, high impact on ecosystems



Challenge: Increase in human-wildlife conflict and impact on habitat.

Goals*

NoCo will protect and conserve natural and cultural/heritage resources in the NoCo region by:

- Inspiring an outdoor stewardship ethic among visitors and recreationists
- Building community support for increased funding for public land management and exploring opportunities for sharing financial resources across jurisdictions
- Increasing the amount of conserved and/or restored land and protecting land already conserved or protected
- Supporting outdoor recreation and visitation in areas best suited for that activity

NoCo will provide equitable access and a quality recreational experience to residents and visitors by:

- Improving the quality of the visitor experience through management approaches, education, more effective infrastructure, and other means
- Ensuring that the region continues to provide and support a wide range of quality outdoor experience opportunities
- Welcoming and encouraging participation by underrepresented communities and by those with accessibility challenges
- Reducing conflict and promoting compatibility among visitors and recreational use types and increasing the safety of outdoor experiences

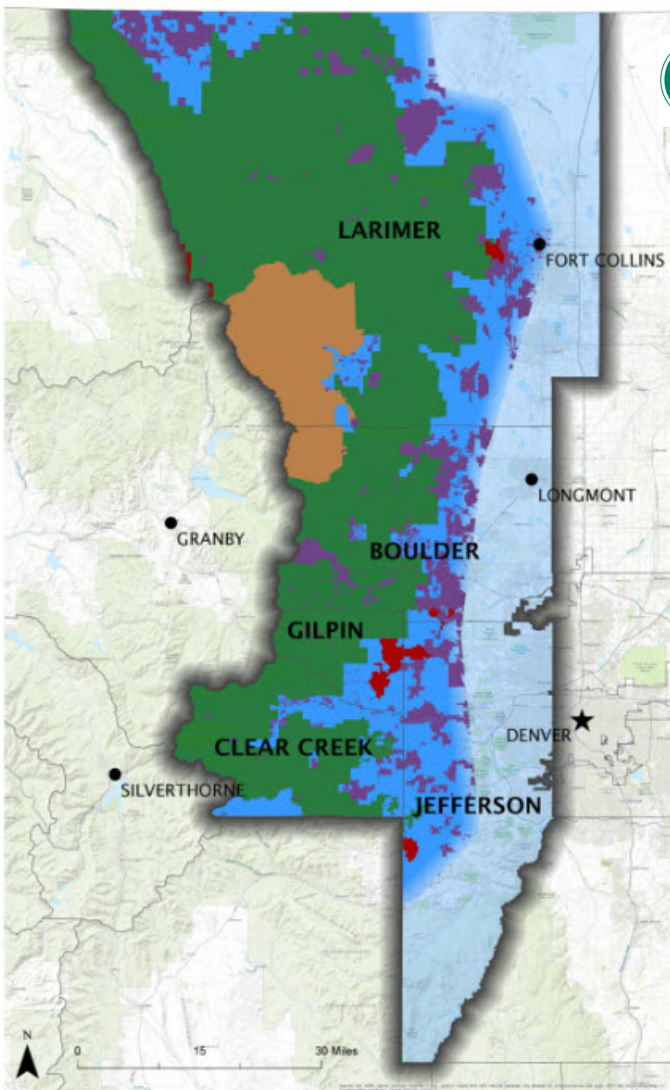
*See website for unabbreviated list of goals



Jefferson County Open Space

Area of Focus

Agency Partners





- Arapaho and Roosevelt National Forests and Pawnee National Grassland, U.S. Forest Service
- Colorado Parks & Wildlife, Northeast Region
- Rocky Mountain National Park, National Park Service
- Boulder County
- Clear Creek County
- Gilpin County
- Jefferson County
- Larimer County

- Arapaho and Roosevelt Natl. Forests
- Counties Participating in NoCo PLACES
- Rocky Mountain Natl. Park
- State Parks
- Other Public Lands

Date: August 8th, 2020

Data Sources:
 Colorado Parks & Wildlife
 National Park Service
 United States Forest Service
 Colorado Natural Heritage

Coordinate System: NAD 1983 UTM Zone 13N
 Projection: Transverse Mercator
 Datum: North American 1983
 False Easting: 500,000.0000
 False Northing: 0.0000
 Central Meridian: -105.0000
 Scale Factor: 0.9996
 Latitude Of Origin: 0.0000
 Units: Meter

 www.nocoplaces2050.com
 info@nocoplaces2050.com

Visit website for information on core topics, research, and downloadable materials