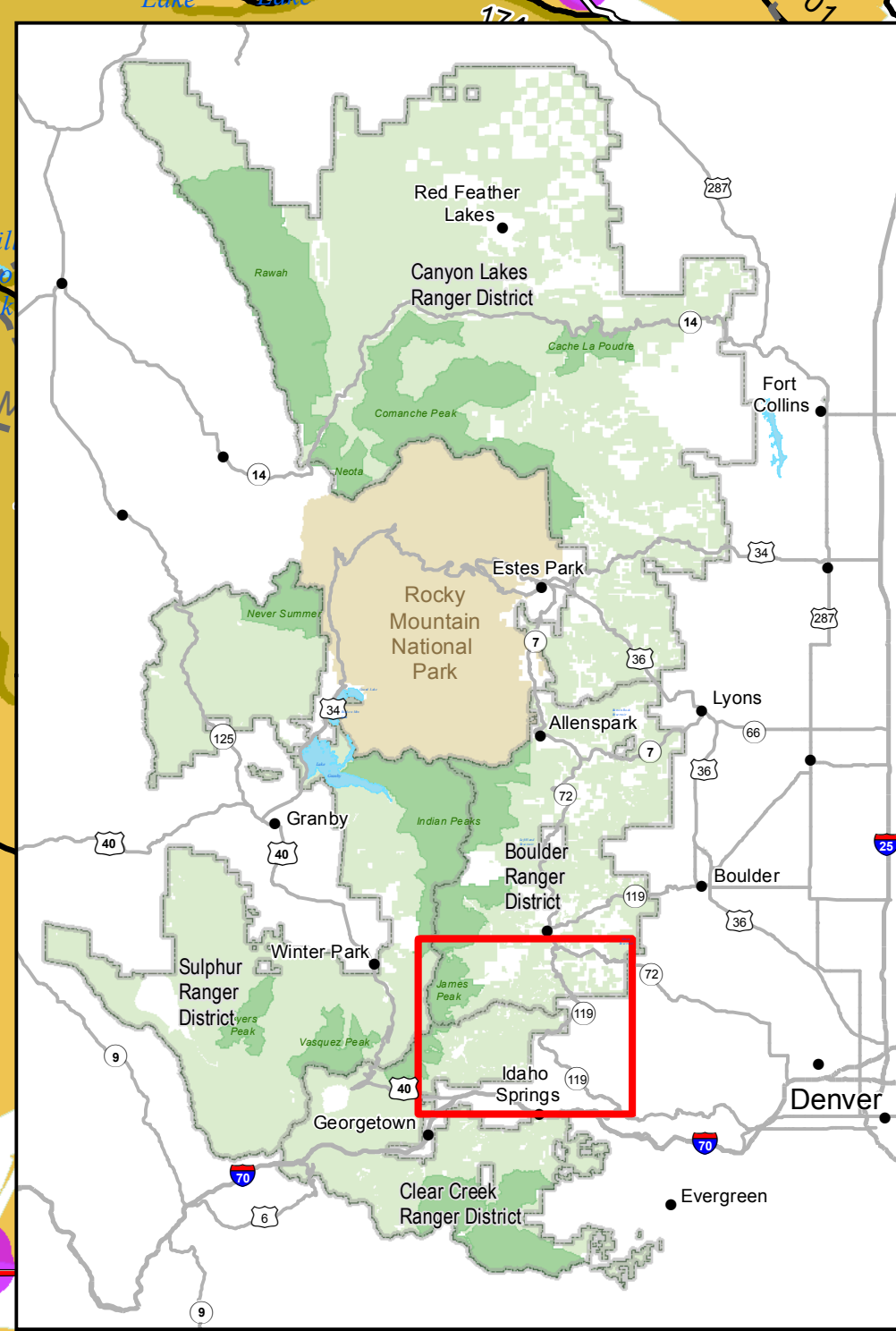
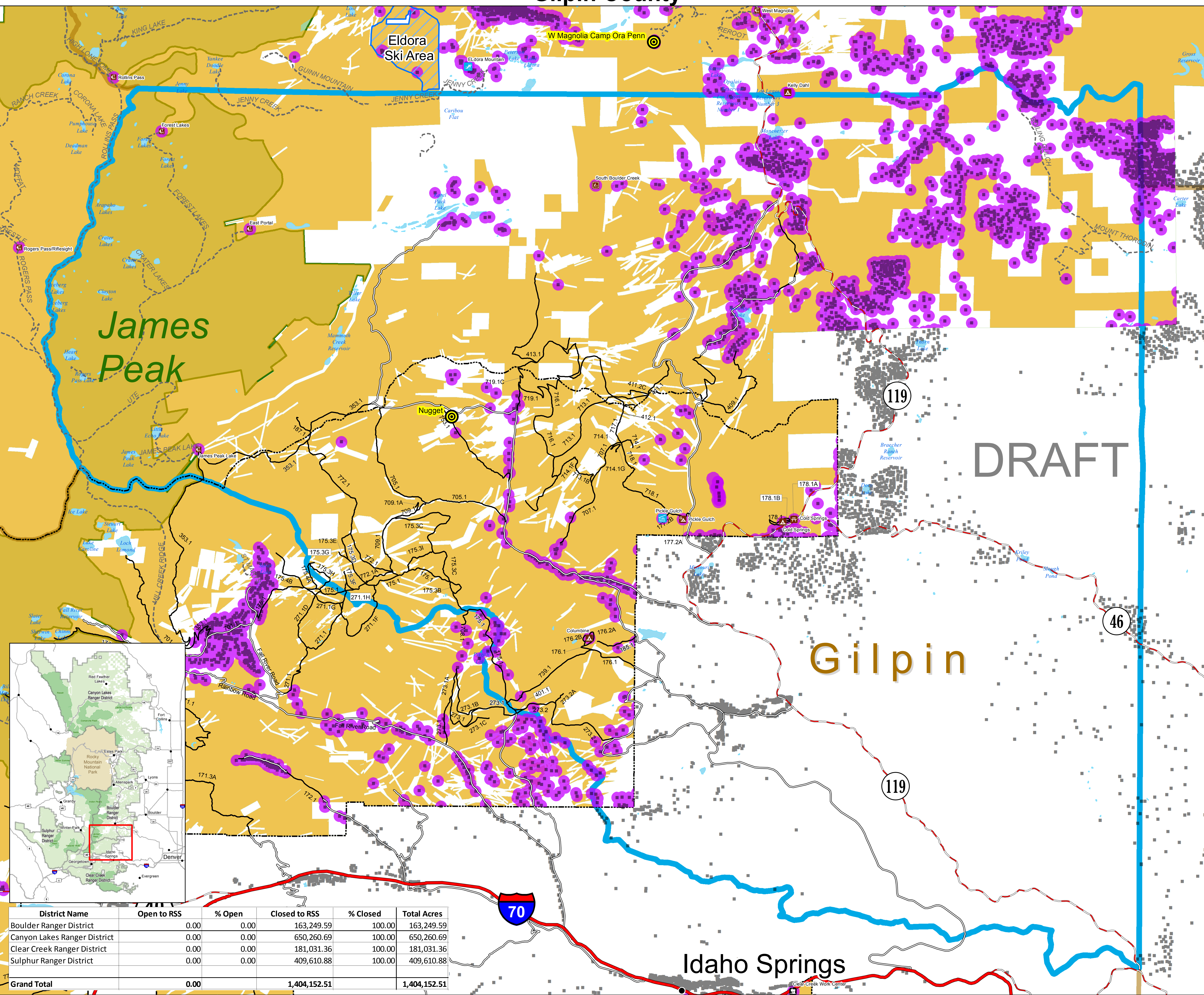


Alternative 4 - No Dispersed Shooting - Rec Sport Shooting

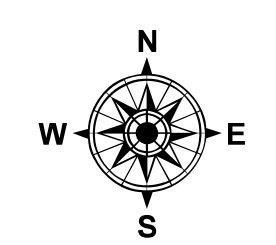
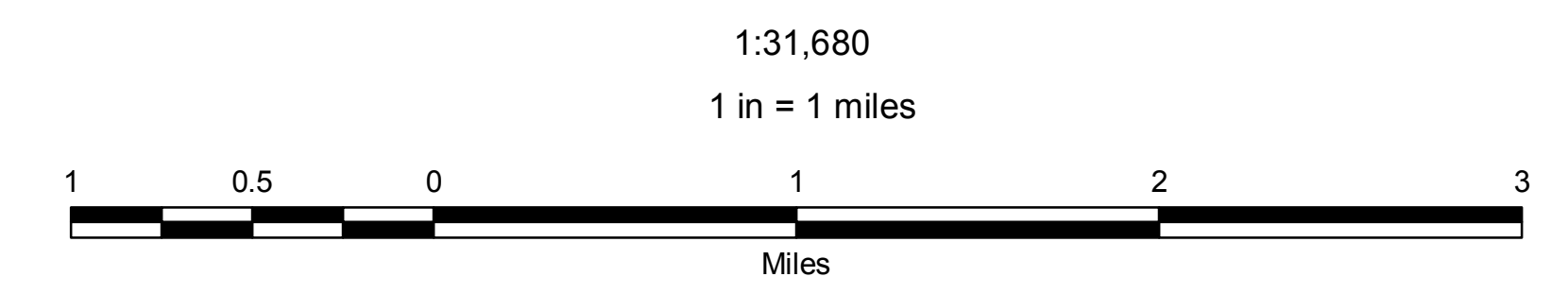
Gilpin County



District Name	Open to RSS	% Open	Closed to RSS	% Closed	Total Acres
Boulder Ranger District	0.00	0.00	163,249.59	100.00	163,249.59
Canyon Lakes Ranger District	0.00	0.00	650,260.69	100.00	650,260.69
Clear Creek Ranger District	0.00	0.00	181,031.36	100.00	181,031.36
Sulphur Ranger District	0.00	0.00	409,610.88	100.00	409,610.88
Grand Total	0.00		1,404,152.51		1,404,152.51

Legend

- No Dispersed Recreational Sport Shooting
- Existing Closure Rec Sites/Homes
- Non Federal Lands
- US Forest Service Lands
- Wilderness
- Ranger District Boundary
- Gilpin County
- County Line
- Ski Area Boundary
- Proposed Shooting Ranges
- Residences/Structures
- Interstate
- NFSR Roads Open to Public
- State or US Highway
- County Road
- Trail



Disclaimer: This map is for display purposes only and not for navigation. This product is reproduced from geospatial information prepared by the U.S. Department of Agriculture, Forest Service. GIS data and product accuracy may vary. Using GIS products for purposes other than those for which they were created may yield inaccurate or misleading results.

The Forest Service reserves the right to correct, update, modify, or replace GIS products based on new inventories, new or revised information, and if necessary in conjunction with other federal, state or local public agencies or the public in general as required by policy or regulation. Previous recipients of the products may not be notified unless required by policy or regulation. Information shown is based upon data compiled as of January 2015.

For more information, contact: Arapaho/Roosevelt National Forest Supervisors Office: 970-295-6600

Draft October 2017