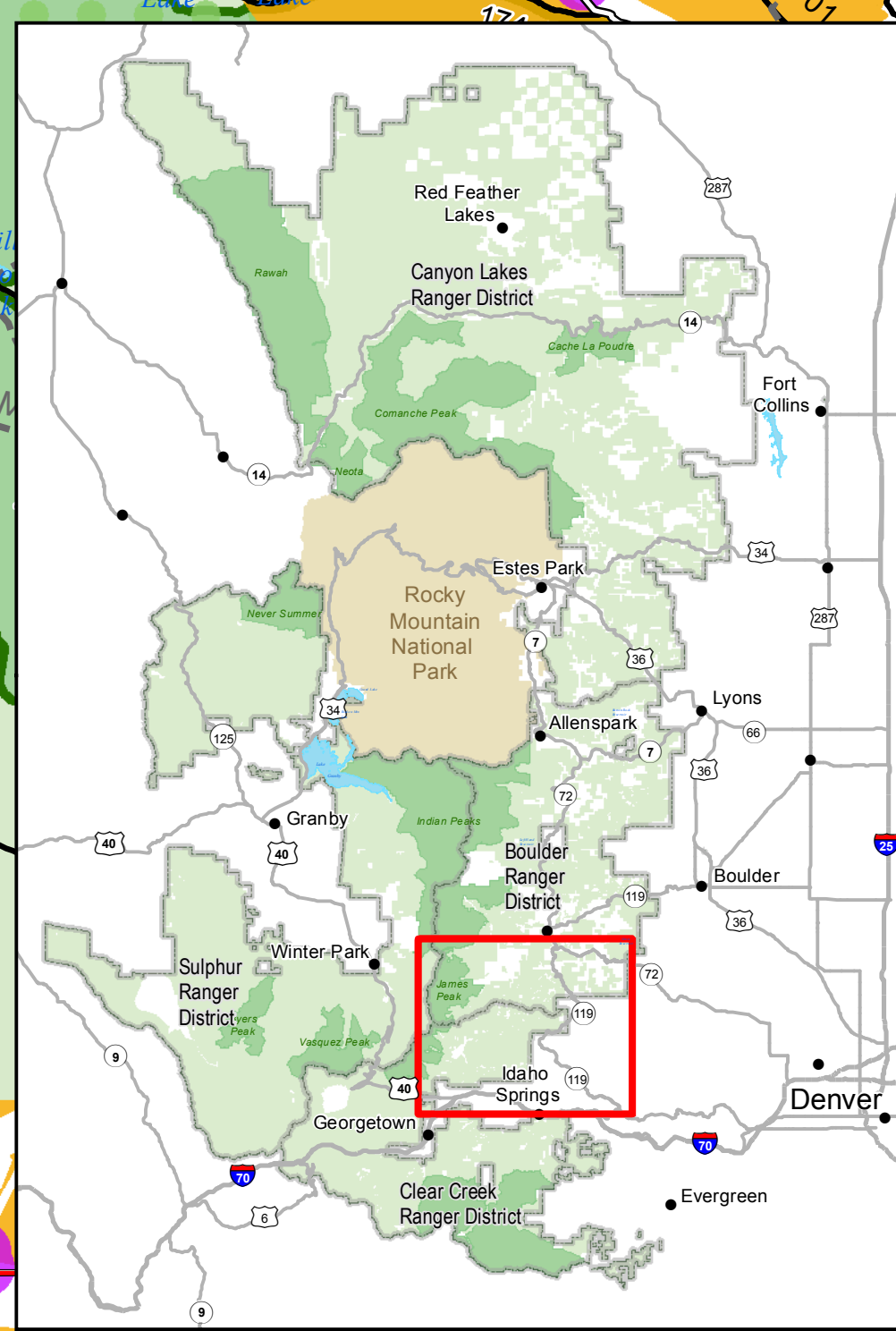
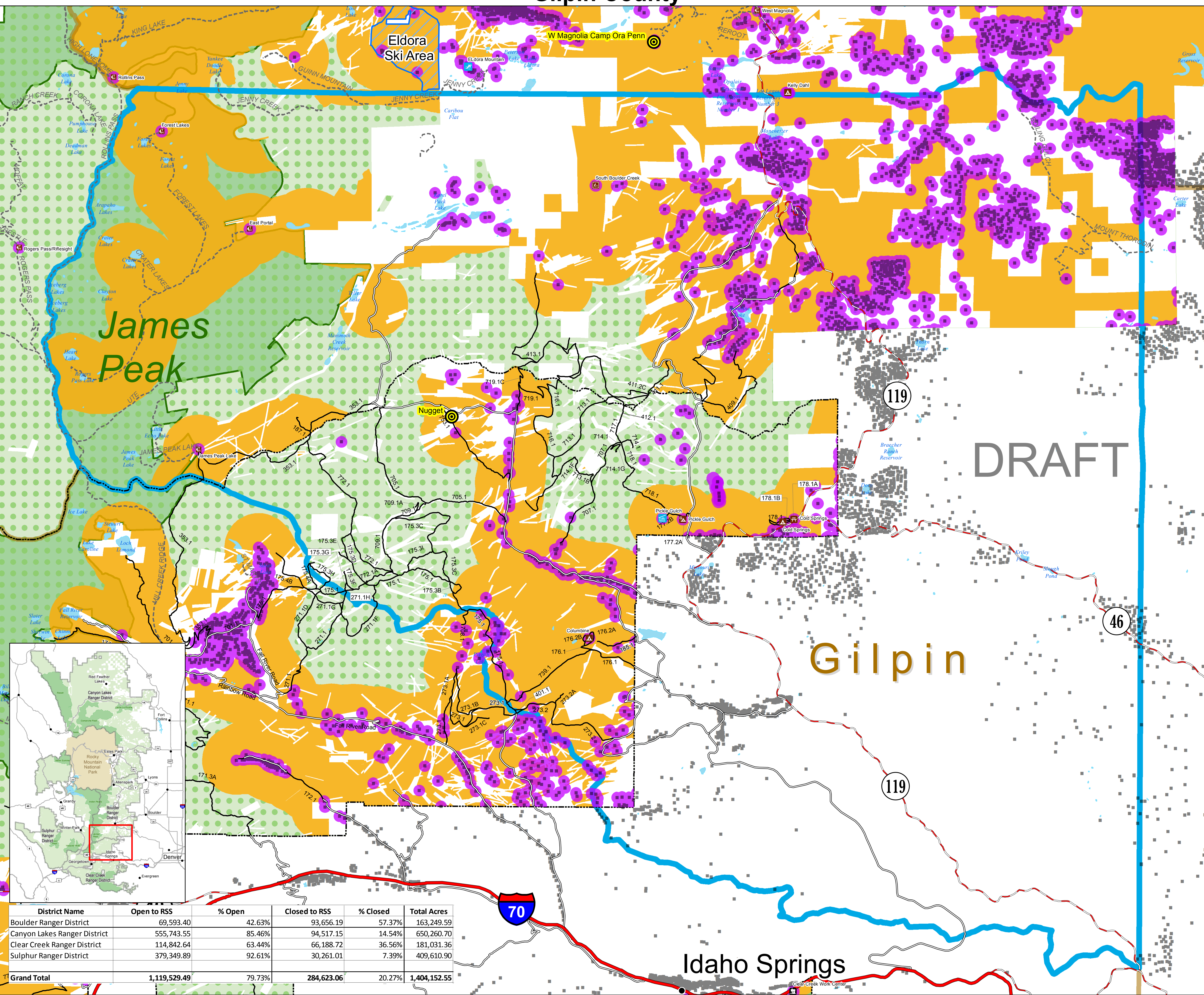


# Alternative 3 - Local Factors - Rec Sport Shooting

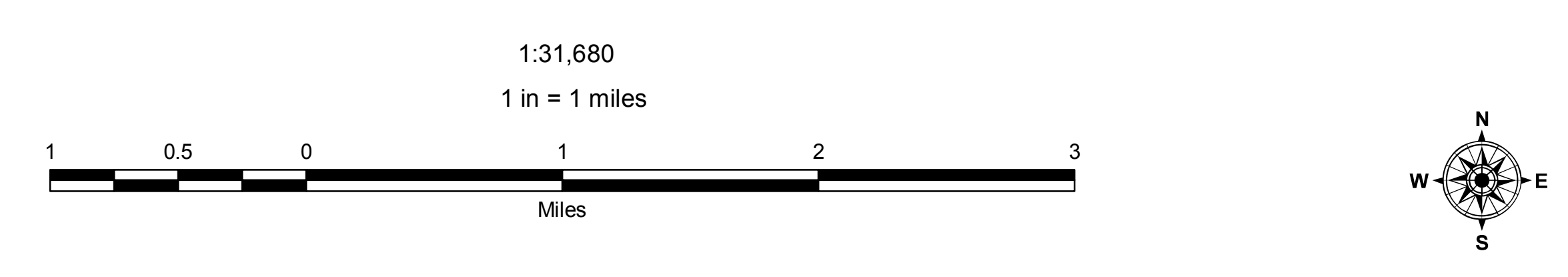
## Gilpin County



District Name	Open to RSS	% Open	Closed to RSS	% Closed	Total Acres
Boulder Ranger District	69,593.40	42.63%	93,656.19	57.37%	163,249.59
Canyon Lakes Ranger District	555,743.55	85.46%	94,517.15	14.54%	650,260.70
Clear Creek Ranger District	114,842.64	63.44%	66,188.72	36.56%	181,031.36
Sulphur Ranger District	379,349.89	92.61%	30,261.01	7.39%	409,610.90
<b>Grand Total</b>	<b>1,119,529.49</b>	<b>79.73%</b>	<b>284,623.06</b>	<b>20.27%</b>	<b>1,404,152.55</b>

**Legend**

Lands Not Suitable for Dispersed Recreational Sports Shooting	Ranger District Boundary	Interstate
Lands Suitable for Dispersed Recreational Sports Shooting	Gilpin County	NFSR Roads Open to Public
Existing Closure Rec Sites/Homes	County Line	State Or US Highway
Non Federal Lands	Ski Area Boundary	County Road
US Forest Service Lands	Proposed Shooting Ranges	Trail
Wilderness	Residences/Structures	



**Disclaimer:**  
 This map is for display purposes only and not for navigation. This product is reproduced from geospatial information prepared by the U.S. Department of Agriculture, Forest Service. GIS data and product accuracy may vary. Using GIS products for purposes other than those for which they were created may yield inaccurate or misleading results.  
 The Forest Service reserves the right to correct, update, modify, or replace GIS products based on new inventories, new or revised information, and if necessary in conjunction with other federal, state or local public agencies or the public in general as required by policy or regulation. Previous recipients of the products may not be notified unless required by policy or regulation.  
 Information shown is based upon data compiled as of January 2015.  
 For more information, contact: Arapaho/Roosevelt National Forest Supervisors Office: 970-295-6600

**Draft October 2017**